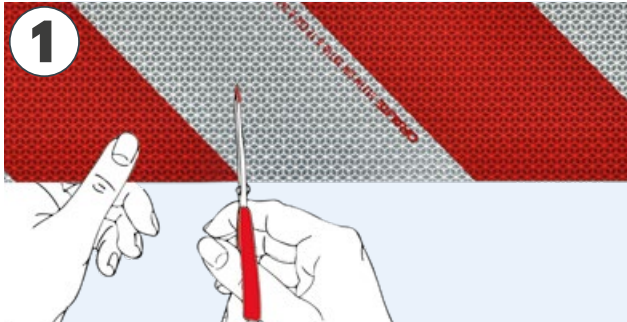
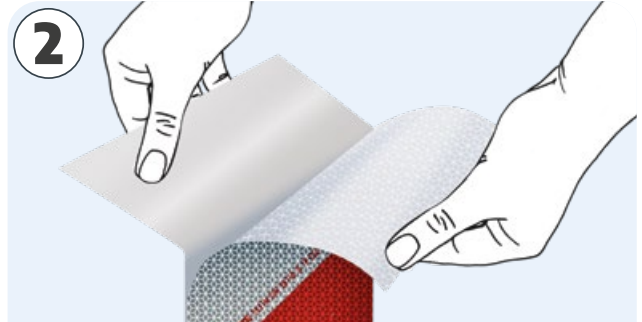


VEHICLE SAFETY MARKINGS APPLICATION INSTRUCTIONS



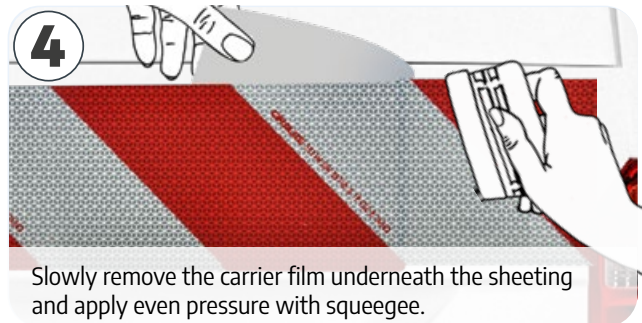
1 Measure the length of the reflective material and cut from the roll.



2 Peel off approx. 10 cm carrier film and fold it over.

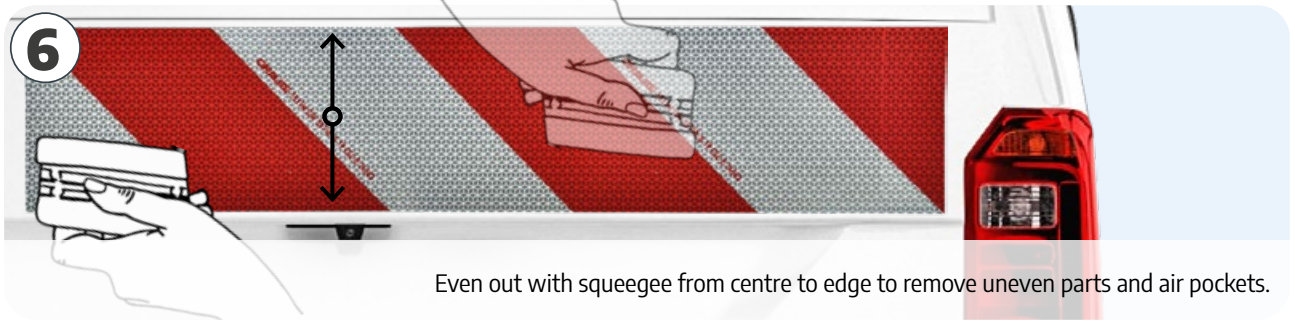


3 Position the sheeting on the vehicle – tape strips might help to hold it in place. Press the part without carrier film onto the surface using a squeegee.

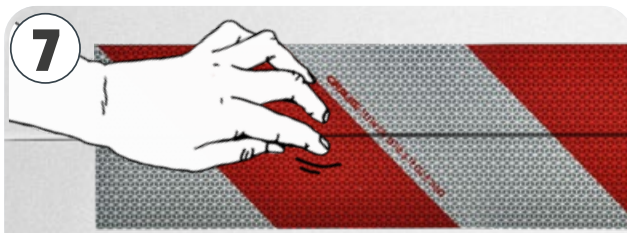


4 Slowly remove the carrier film underneath the sheeting and apply even pressure with squeegee.

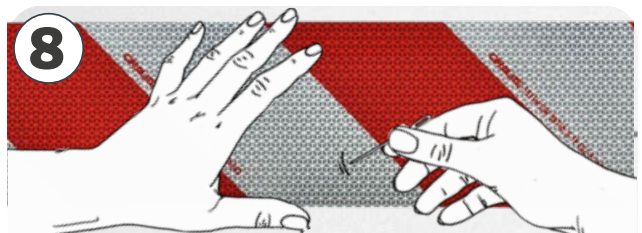
5 Do not stretch the sheeting and do not touch the adhesive side.



6 Even out with squeegee from centre to edge to remove uneven parts and air pockets.



7 When applying over joints, cut the sheeting where the joint is and apply pressure to the edges.



8 Remaining air pockets can be punctuated with a needle or sharp blade. Apply some pressure on the spot.