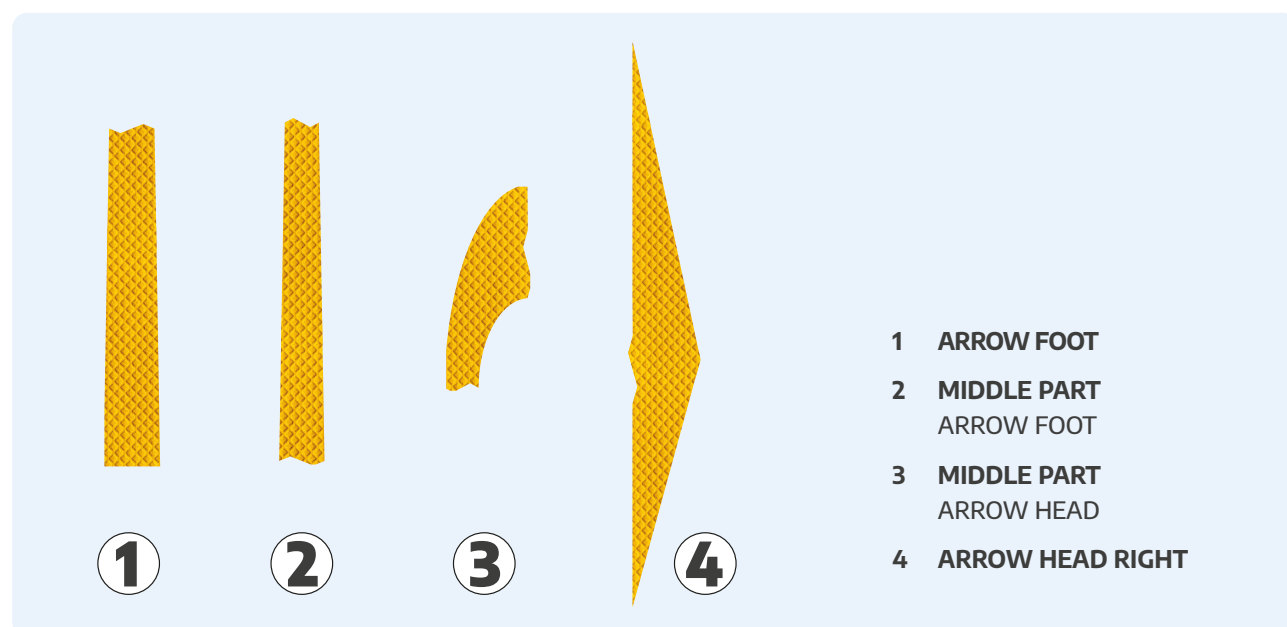


## APPLICATION INSTRUCTIONS **ROAD MARKING** **ARROW RIGHT | D7**

Pre-cut pavement marking arrow made of 3M™ Stamark™ A380 ESD (white for permanent application) or 3M™ Stamark™ A721 VHD (yellow for temporary application)  
For professional application the use of 3M™ Stamark™ Surface Preparation Adhesive P50 as well as a roller tamper cart is recommended.

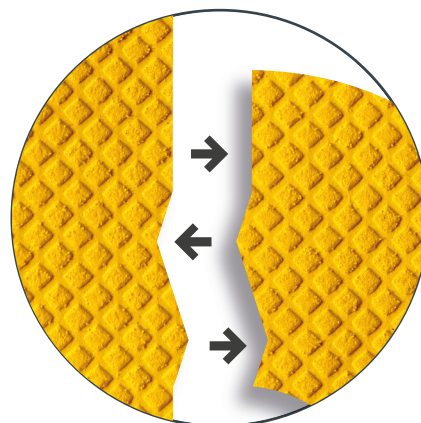
### COMPONENTS:

4 parts with cut edges that precisely fit to the adjoining part of the arrow.



### HOW TO APPLY THE ARROW:

Place the arrow parts in the intended place.  
Start with the application of the arrow foot. Then, joint the other parts piece by piece making sure the parts lay edge to edge.



Rev.: August 2022